



Primary Flowpoints

Flow-Teknikk as

Style T Sight Glass Tube

This straight through tube sight glass is ideal for you to visually check the presence, colour and condition of a liquid.

- ◆ 360° all round view
- ◆ High quality design
- ◆ CE marked and PED compliant
- ◆ Pressures up to 10 bar
- ◆ Temperatures up to 150°C
- ◆ Short lead times
- ◆ Designed and manufactured in the UK



Application

The style T sight glass has a plain straight through borosilicate glass tube with stainless steel flanged ends and is used to check for the presence of a liquid where there is intermittent flow, partially filled lines or entrained air. It can be used in vertical or horizontal lines.

Construction

The standard flanges available are ANSI 150 and PN16 made from 316 stainless steel whilst other flange specifications and materials can be supplied. The flanges are held in place by stainless steel tie rods and fasteners that give it a rigid construction. The seals are viton o rings giving superior protection. For ease of maintenance the glasses can be individually removed and replaced.

Options

Flanged Ends - We can supply sight glasses in special materials such as duplex, super duplex or low carbon steels. Materials can be supplied conforming to NACE MR0175. For particularly corrosive applications the flanges can be lined with HALAR, ECTFE or PFA.

Perspex Shield - We can fit a perspex safety shield round the glass tube to protect against accidental damage.

Quality

All flowpoints indicators are manufactured to the highest standards. The quality system is independently audited by BSI and certified to ISO 9000. The indicators are fully PED compliant and CE marked where required. TUV are our external auditors for the Pressure Equipment Directive.

Full material traceability is maintained and material certificates and pressure test certificates are supplied on request.

Specification Code
Code

Description

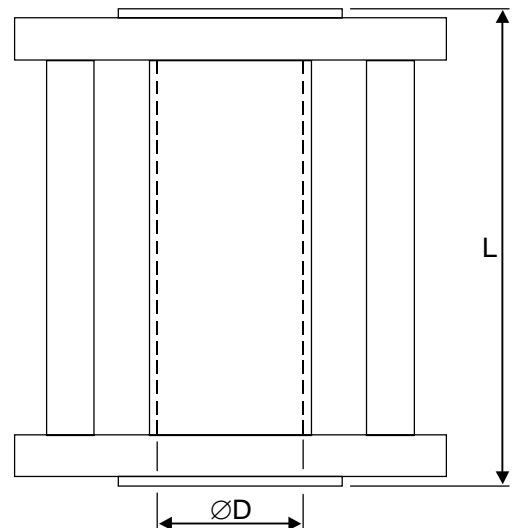
ST				Stainless steel body 316 S11
	B			Borosilicate
				Indicator Size
		015		15mm / ½"
		020		20mm / ¾"
		025		25mm / 1"
		040		40mm / 1 ½"
		050		50mm / 2"
		080		80mm / 3"
		100		100mm / 4"
		150		150mm / 6"
		200		200mm / 8"
				End Connections
		A		ANSI 150
		C		ANSI 300
		N		PN16
			S	Prespex safety shield

Materials of Construction

- Flanges - 316 Stainless steel
- Glass Tube - Borosilicate
- O Ring Seals - Viton
- Tie Rods - Stainless steel
- Fasteners - A2 Stainless steel

Dimensions

Part Number	Size (nb)	L (mm)	D (mm)	Max Press. (bar)
STB-015-A	½"	120	15	10
STB-020-A	¾"	120	20	10
STB-025-A	1"	140	25	10
STB-040-A	1 ½"	195	40	6
STB-050-A	2"	225	50	6
STB-080-A	3"	225	80	6
STB-100-A	4"	225	100	6
STB-150-A	6"	250	150	6
STB-200-A	8"	250	200	6



Flow-Teknikk AS

Telefon: 66 77 54 00

E-post: mail@flow.no

Web: www.flow.no

Tel: 01922 650009

Fax: 01922 640326