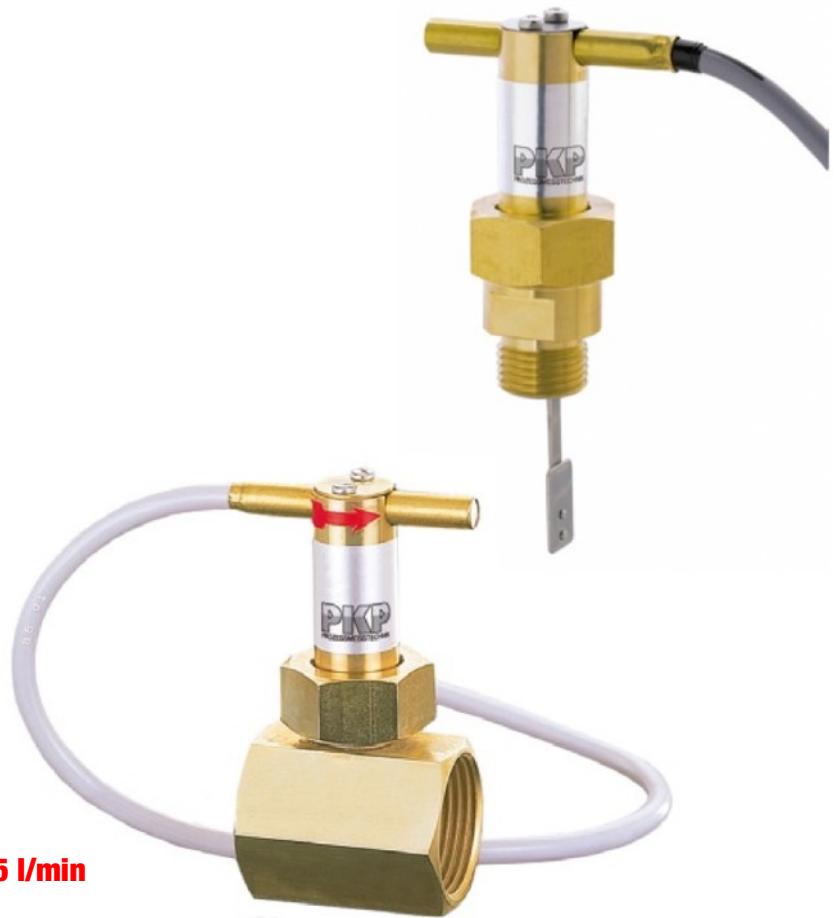


# DP02

## Paddle-Type Flow Switch with Cable Connection

- for liquids
- with and without T-fitting, for piping 3/8" to 6"
- design in brass, stainless steel or T-fitting of PVC
- causes only slight pressure drop
- pendulum system of stainless steel
- max. pressure: 25 bar  
max. temperature: 110 °C
- switching ranges: 2,7...4,5 to 440...655 l/min



### Description:

The flow switch model DP02 works according to the proven paddle- principle. The flowing liquid pushes against the surface area of a paddle mounted at the end of a pivoting arm. The dynamic pressure against the plate deflects the arm. Then a permanent magnet which is attached on the other end of the arm switches an adjustable reed contact. By moving the reed contact different switching points can be set.

### Typical application:

The DP02 paddle flow switch is suitable for monitoring the switching point of low viscosity liquids. The setting of the switching point takes place within the process.

## Models, Switching ranges:

Nominal Size DN	Switch on at [l/min] H <sub>2</sub> O	Switch off at [l/min] H <sub>2</sub> O	Qmax. [l/min] H <sub>2</sub> O
<b>DP02.1-4: with brass, stainless steel or PVC T-fitting</b>			
10	2,7...4,5	1,7...3,5	40
15	4,5...6,5	3...5,5	45
20	8,5...12	6,6...11	80
25	13...20	11...19	130
32	17...26	15...25	160
40	28...45	27...43	300
50	45...58	43...56	500
<b>DP02.5-7: with screw in thread made of brass or stainless steel</b>			
50	44...65	40...60	500
65	75...115	70...105	750
80	120...175	110...165	1.400
100	190...285	175...265	2.500
125	310...450	280...420	2.900
150	440...655	410...600	3.300

## Dimensions:

Nominal size DN	Connection Rp	SW [mm]	Z [mm]	I [mm]
<b>DP02.1/2: with T-fitting made of brass/ brass nickel plated</b>				
10	3/8	30	50	11
15	1/2	30	50	11
20	3/4	30	50	11
25	1	37	50	15
32	1 1/4	46	50	15
40	1 1/2	52	50	15
50	2	-	120	15
<b>DP02.3: with stainless steel T-fitting</b>				
10	3/8	30	50	11
15	1/2	30	50	11
20	3/4	30	50	11
25	1	-*	80	15
32	1 1/4	-*	95	15
40	1 1/2	-*	115	15
50	2	-	120	15
<b>DP02.4: with PVC T-fitting</b>				
10	-	-	54	16
15	-	-	54	16
20	-	-	66	19
25	-	-	79	22
32	-	-	96	26
40	-	-	116	31
50	-	-	143	38

\* round housing

## Order Code:

Order number:

DP02. 1. 10. 0

**Paddle-type Flow Switch with cable connection**

### Model:

- 1 = T-fitting made of brass with female thread R
- 2 = T-fitting made of brass nickel plated with female thread R
- 3 = T-fitting made of stainless steel with female thread R
- 4 = T-fitting made of PVC (glued in connection)  
upper part made of stainless steel
- 5 = screw in thread G 1/2 male, made of brass
- 6 = screw in thread G 1/2 male, made of brass nickel plated
- 7 = screw in thread G 1/2 male, made of stainless steel

### Nominal size:

#### DP02.1-4:

- 10 = 3/8"
- 15 = 1/2"
- 20 = 3/4"
- 25 = 1"
- 32 = 1 1/4"
- 40 = 1 1/2"
- 50 = 2"

#### DP02.5-7:

- 00 = screw in thread G 1/2 suitable for all nominal sizes from DN 50

### Options:

- 0 = without
- SPFxx = adjusted set point decreasing flow
- SPSxx = adjusted set point increasing flow
- 9 = please specify in plain text

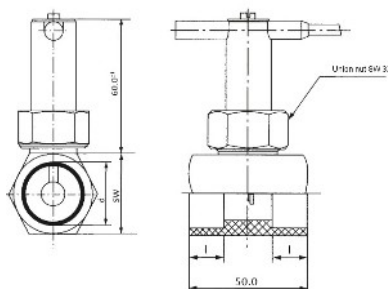
## Technical Data:

<b>Max pressure:</b>	25 bar (brass and st. steel) 2,5 bar (PVC)
<b>Max. medium-temperature:</b>	110 °C (brass and st. steel) 60 °C (PVC)
<b>Reed contact:</b>	N/C, N/O, adjustable (standard / factory setting N/O, rising level)
<b>Contact rating:</b>	230 VAC/ 1,5 A, 80 W, 90 VA max.
<b>Hysteresis:</b>	5 %
<b>Connection cable:</b>	1,5 m length PVC
<b>On request:</b>	soldered version

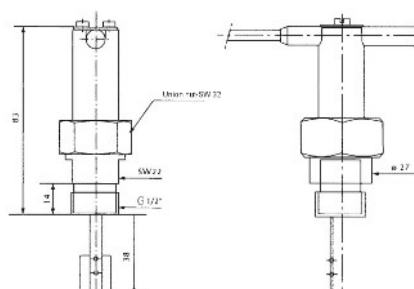
## Materials:

<b>T-fitting:</b>	brass, st. steel 1.4571 or PVC
<b>Paddle:</b>	st. steel 1.4410
<b>Union nut:</b>	brass nickel plated
<b>Magnet:</b>	Ferrite OX 300

Standard version



Screw-in version



T-fitting PVC

